

# Care Closer to Home Innovation & Service Development for Paediatric Oncology Services

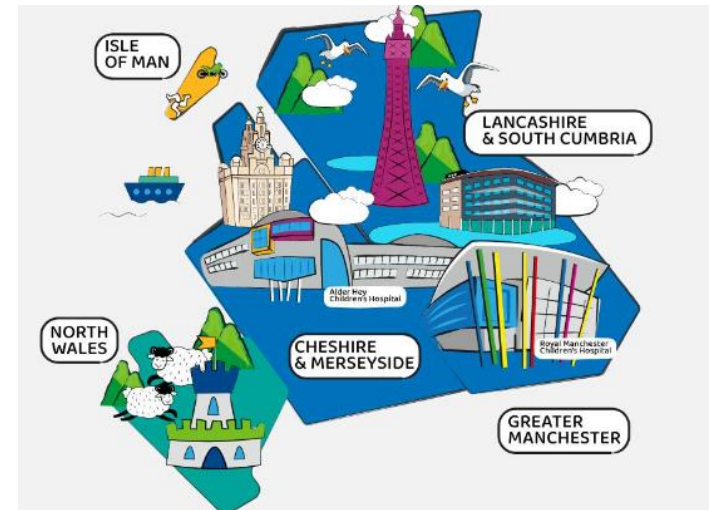


**Proof of Concept**



# NWCCODN overview

- Established October 2022
- Work in partnership with 12 providers across the North West
- 2 Principal Treatment Centres
- 10 Paediatric Oncology Shared Care Units



[North West Children's Cancer Operational Delivery Network \(nwchildrenscancerodn.nhs.uk\)](https://nwchildrenscancerodn.nhs.uk)



@NWCCODN

# How did we get here?



- Collaborative approach across systems to consider a project within Children's Cancer services.
- Completed an application bid and applied via Cancer Alliances.
- Domain of interest within bid criteria: **Personalised Care & Innovation**



Regional Home  
Care Team



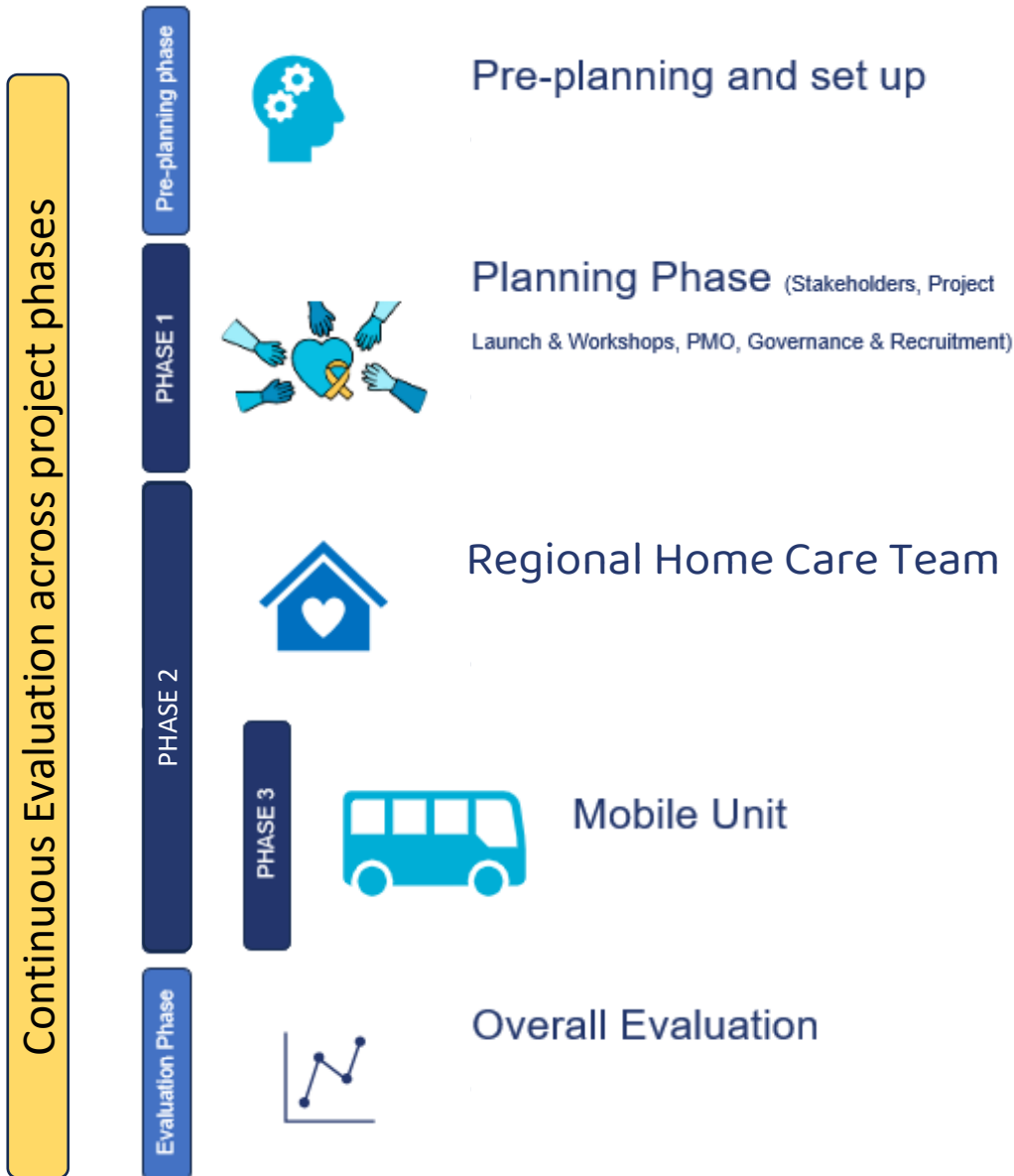
Mobile Unit

# Project: Care closer to home

Project Information	
Project Aim	Deliver supportive care and chemotherapy either in the home environment or via mobilisation of a mobile cancer care unit, whilst maintaining safety and ensuring equity of access to specialist services.
Rationale	The purpose of the project is to deliver on the NHS 10-year plan and the 2021 NHSE Paediatric Cancer Service Specifications that stipulate care should be delivered closer to home in a safe, effective way. This is an innovative 18-month proof of concept project providing hospital care closer to home via a mobile home care team delivering care in children's homes and the addition of a mobile chemotherapy bus. This project will ensure eligible children and young people receive safe effective care at home, or closer to home via a chemo bus therefore reducing attendances and admissions to RMCH and AHCH; which in turn will reduce bed pressures for certain aspects of care. Additionally, there will be a reduction in the significant travel burden and associated cost for families and improved overall experience of care.
Key Area of focus	<ul style="list-style-type: none"> <li>▪ Personalised Care &amp; Innovation</li> <li>▪ Access to Care</li> <li>▪ Equity of Care</li> <li>▪ Reduced travel impact and financial cost for accessing treatment (from service user perspective)</li> <li>▪ Reduce health Inequalities</li> <li>▪ Capacity within PTCs and sustainability of services</li> </ul>
Finance	Project funded regionally via Cancer Alliances in NW



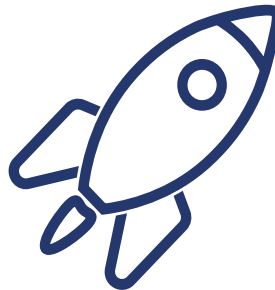
# Overview of project



# CC2H Project Launch



FORMAL COMMS



LIVE LAUNCH



ENGAGEMENT EVENTS

## Professional Engagement Workshops

- Wednesday 20th November (@AHCH in AM)
- Friday 29th November (@RMCH in AM)
- Friday 6th December (L&SC in AM)
- Thursday 12th December (MOP UP Event Virtual)

## Patient & Family Engagement Workshops (in-person):

- Via established Charity Events and Coffee Mornings
- Using PPI WG



# Contact Us



## North West Children's Cancer Operational Delivery Group

Website: <https://www.nwchildrenscancerodn.nhs.uk/>

Email: [info.nwccodn@mft.nhs.uk](mailto:info.nwccodn@mft.nhs.uk)

---



### **Katharine Field**

Innovation Project Officer (NWCCODN)

*Co-Lead for Project (Project Manager)*

---



### **Charlotte Lloyd**

Quality Improvement Lead Nurse (NWCCODN)

*Co-Lead for Project (Service Development Manager)*

---