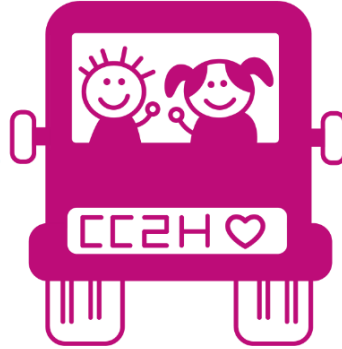




care
closer
to home



A service development and innovation proof of concept within Children's Cancer Services.

Issue 6 | June 2026

The Care Closer to Home project aims to increase focus on the delivery of supportive care and chemotherapy closer to home, either in the home environment or via the Mobile Cancer Care Unit at a location close to the patient's home.

Welcome to a bumper issue of the Care Closer to Home Newsletter! The team have been busy and we have lots to update you all on. In this issue we have:

- **Meet our new driver Eddie**
- **The Mobile Unit back on BBC News**
- **Celebration of the recent Launch Events**
- **Greater Manchester Cancer Conference Presentation**
- **Alan's Journey**
- **Mobile Unit Family Story & Feedback so far**
- **What's Next: Fundraising, SIOP Texas and Pilot Extension**



Meet our Care Closer to Home team member Eddie!



Eddie brings over 10 years of experience of working with children in the education sector. Working with children has been the most rewarding part of Eddie's career, and he is looking forward to continuing that journey within the NHS. Eddie enjoys playing video games and solving maths problems, and it already established himself as our Nintendo Switch guru!



Mobile Cancer Care Unit

We were back on BBC North West Tonight News in May showcasing the Mobile Unit out in the community.

Click [here](#) for a look behind the scenes!



This project is in collaboration with:



Launch Events

We hosted three high-profile regional launch events to introduce the Children's Mobile Cancer Care Unit and celebrate all the achievements so far. The launches demonstrated strong stakeholder engagement, clear patient benefit, and significant momentum for delivering chemotherapy and supportive care closer to home across the North West.



Greater Manchester Cancer Conference

Lisa Howell presented the Care Closer to Home (CC2H) project, showcasing the mobile cancer care model and its role in delivering paediatric oncology care closer to patients' homes. This sparked lots of engagement and questions from the audience around the practical and system challenges along with the benefit to patients and their families.

The team also had a stall helping to further raise the profile of the project and engage with colleagues across the system.





Alan's Journey

The adventure so far...

Alan has been travelling round on the Mobile Unit with the team. So far he has been to Accrington Stoney FC, Blackpool FC and many more.



Follow Alan's Journey @hopefortomorrowcharity

Mobile Unit Family Story & Feedback

"Being able to have this in place is phenomenal. It will change our weekly lives, cause less stress, less time away from family, less separation anxiety for my other child. So so many positive's. Thank you so much"

"Excellent environment for the child with friendly welcoming staff and less travel and less impact to our day"

"Fantastic service really quick easy staff great highly recommend"

"We really appreciate this initiative"

"Brilliant Idea"

*"The location of the chemo unit today was great, took me 10 minutes to drive to the unit where there is also free parking. The locality of the unit is vital for patients and their parents around the **** area. Children are put at ease on the bus it is not overwhelming and is a less traumatic day for them in terms of travel, schooling isn't affected as much, being with siblings or family members for longer at home. The chemotherapy unit provides safe treatment and continuity of treatment from nurses they know and are comfortable with. For my son this is better as he can be rather quiet and doesn't cope well with new places or faces. My son also finds the waiting room in hospital rather busy and sometimes chaotic, loud the bus removes that for him so he can just concentrate on having his treatment and going home without all background noise."*



The pilot will end on the 19th July. We are currently working on the robust Evaluation Report. The response from children and families that have used the mobile unit has been really positive as shown on page 3. The Network are working with system partners to explore opportunities to continue the service. The MFT Charity have agreed to support with fundraising. See the poster and QR code on page 5.

CHARITY NETBALL TOURNAMENT
BE A CANCER CARE SUPERHERO!
AIMED AT BACK TO NETBALL TEAMS!

EVENT DETAILS	WHAT TO EXPECT!
<p>DATE: Saturday 12th September 2026</p> <p>TIME: 12-4pm</p> <p>VENUE: Club Priestnall, Priestnall Road, Stockport SK4 3HR</p>	<ul style="list-style-type: none"> ★ FAST-PACED NETBALL MATCHES ★ TEAM PRIZES & AWARDS ★ RAFFLES & FUNDRAISING ACTIVITIES ★ A CHANCE TO MAKE A REAL DIFFERENCE!



INTERNATIONAL SOCIETY OF PAEDIATRIC ONCOLOGY
SAN ANTONIO, TEXAS, USA | SEPTEMBER 15-18, 2026

We are very excited to have our Care Closer to Home abstract accepted at SIOp! The team will be presenting the project with the hope other countries across the world are inspired to bring care closer to home.



GET INVOLVED! Project updates and involvement will come through the ODN working groups and via patient and family engagement.



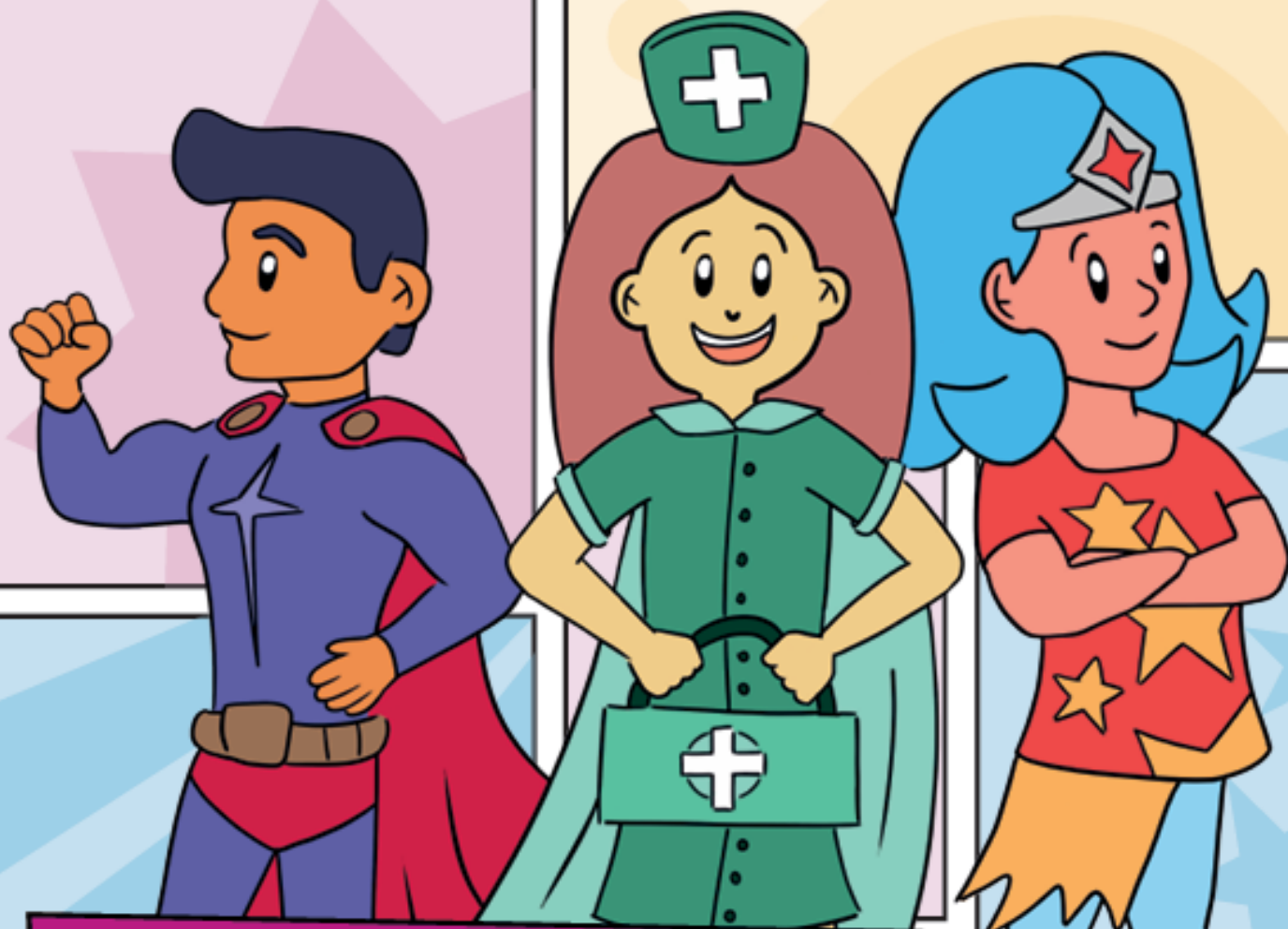
Info.nwccodn@mft.nhs.uk



[Care Closer To Home Webpage](#)

@NWCCODN





***BE A CANCER CARE
SUPER HERO!***



***DONATE TO BRING CANCER
CARE CLOSER TO HOME
ACROSS THE NORTH WEST
& NORTH WALES***

