



A service development and innovation proof of concept within Children's Cancer Services.

Issue 3 | August 2025

Project Summary Recap

The Care Closer to Home Innovation & Service Development for Paediatric Oncology Services – Proof of Concept project aims to increase focus on the delivery of supportive care and chemotherapy closer to home, either in the home environment or via the Mobile Cancer care Unit at a location close to the patient's home. These specialist services will be delivered whilst maintaining safety and ensuring equity of access to specialist services.

Key achievements to Date

The project is now well under way and the team have been busy! Further achievements have been made since May:



- Continue to progress with our deliverables on the critical path.
- Two CC2H nurses have been appointed at Alder Hey!
- Evaluation Plan has been finalised including staff, patient & family questionnaires and comprehensive literature review and research into global best practice.
- RMCH Youth Forum reviewed and approved the Patient & Family handouts.

Project Timeframe Update

Phase 2: Home Care

Alder Hey have successfully recruited two experienced and passionate nurses to join the Project Team and will be progressing to Phase 2 by October 2025. RMCH have decided to pause Phase 2 planning and focus on Phase 3. This is in response to staff feedback and challenges in recruiting nurses.

Phase 3: Mobile Cancer Care Unit

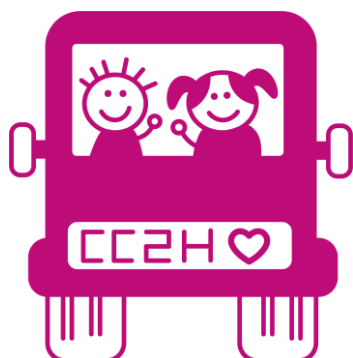
Both teams will be coming together to deliver care on the mobile unit in January 2026. This allows Alder Hey to deliver the home care model and ensures planning for Phase 3 is thorough.

Care in the Home

The Alder Hey team are aiming to go live with Phase 2 -Care in the Home by the beginning of October. The team are in the process of preparing the Standard Operating Procedure (SOP), ordering equipment and preparing the digital systems needed. We will be introducing the AHCH nurses in a future issue and look forward to them joining the team!



Alder Hey Project Team meeting for SOP development.



Mobile Cancer Care Unit

The team are working hard to prepare for Phase 3 and linking in closely with the Hope for Tomorrow charity. The job advert for the mobile unit driver will be out soon and RMCH are focusing on their CC2H nurse recruitment.

This project is in collaboration with:



Get Involved

Project updates and involvement will come through the ODN working groups and via patient and family engagement.



Info.nwccodn@mft.nhs.uk



[Care Closer To Home Webpage](#)

@NWCCODN

