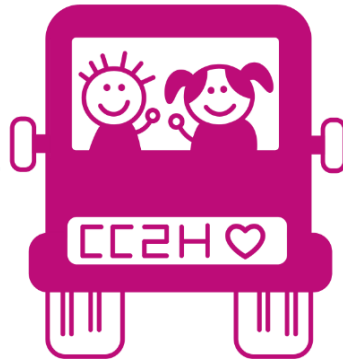




Care closer to home



A service development and innovation proof of concept within Children's Cancer Services.

Issue 5 | April 2026



The Care Closer to Home project aims to increase focus on the delivery of supportive care and chemotherapy closer to home, either in the home environment or via the Mobile Cancer Care Unit at a location close to the patient's home.



Home Care: Impact Data Spotlight



The Alder Hey Project Team and wider MDT have successfully delivered Home Care from 20th Nov 26 to present.

24 patients have been assigned to the Home Care Pathway; of which Toni and Nadine have completed 74 home care visits. These have been a combination of interventions; SACT (43), Non-SACT (13) and Blood Sampling (18). The Non-SACT is GCSF administration.



4515

miles saved for families

Analysis is ongoing and subject to updates as the project progresses.

Patients and families have said that care at home:

"Having chemo at home is much more beneficial for us and great for child's mental health"

"Fantastic initiative, hopefully a permanent way of treatment in the future"

"This made a massive difference for my child, they are so much happier"



This project is in collaboration with:





Mobile Cancer Care Unit

We are very excited to have received the Mobile Cancer Care Unit from Hope for Tomorrow!

The team have been working hard to get everything set up for treating patients. See our feature on BBC North West Tonight [here](#) for a look behind the scenes!

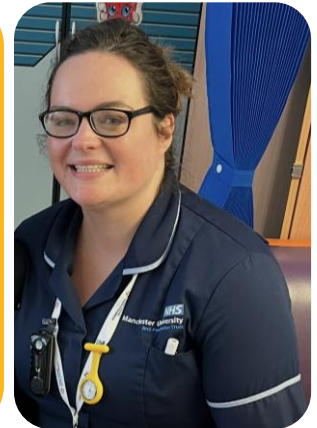


Meet our Care Closer to Home team members Dave and Caroline!



Dave has joined us as our new Mobile Unit driver. He is looking forward to being part of the team and bringing care closer to home! Dave has lots of experience driving HGVs and had worked in the NHS for the last 10 years. He has loads of fab ideas for the Mobile Unit and feels his life experience has led him to this role working with families.

Caroline has joined us as our new Royal Manchester Children's Hospital Nurse. Caroline started her nursing career in 2011 and has worked as an inpatient and outpatient oncology nurse at RMCH along with Proton Beam Liaison Nurse and now part time Paediatric Macmillan nurse. She is really excited about working with the ODN on this project as she has seen first hand the struggles and challenges families face with the frequent travel, long distances and juggling work/ childcare. She feels this project will have such a positive impact and make such a difference to many children and their families.



Nicole graduated from the University of Manchester in 2022 with her Children's Nursing degree, and started her nursing career at The Christie Hospital, where she has spent almost 4 years, caring for teenagers and young adults on an inpatient haematology and oncology ward. Nicole joined the Care Closer to Home team in March 2026, and is really looking forward to the opportunity of treating patients in the community, and thinks this is an amazing learning opportunity for all involved to see how we can make such a positive difference to these patients' lives.



GET INVOLVED! Project updates and involvement will come through the ODN working groups and via patient and family engagement.



Info.nwccodn@mft.nhs.uk



[Care Closer To Home Webpage](#)

@NWCCODN

